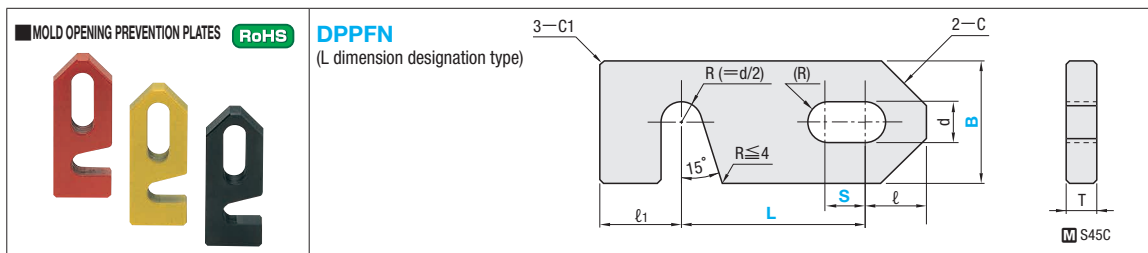


# MOLD OPENING PREVENTION PLATES/URETHANE SPRINGS

— CUT-OUT L DIMENSION DESIGNATION TYPE —

# PUSHER PINS

⚠ Non JIS material definition is listed on P.1351 - 1352



| T  | d  | l  | l <sub>1</sub> | C  | Part Number |    |    | 1mm increments |   |    | Color Safety coloring |
|----|----|----|----------------|----|-------------|----|----|----------------|---|----|-----------------------|
|    |    |    |                |    | Type        | B  | L  | S              | L | S  |                       |
| 12 | 9  | 10 | 15             | 10 | DPPFN       | 25 | 30 | 30             | 0 | 18 | R (Red)               |
| 12 | 14 | 15 | 20             | 15 |             | 38 | 50 | 50             | 0 | 28 | Y (Yellow)            |
| 20 | 22 | 25 | 30             | 15 |             | 50 | 60 | 60             | 0 | 44 | N (Normal)            |

A round hole when S=0. ⚠ Safety coloring is a spray paint (acrylic lacquer). The color may fade when the mold temperature is high.  
 ⚠ N(Normal) → ⚠ Black Oxide (Fe<sub>3</sub>O<sub>4</sub>)

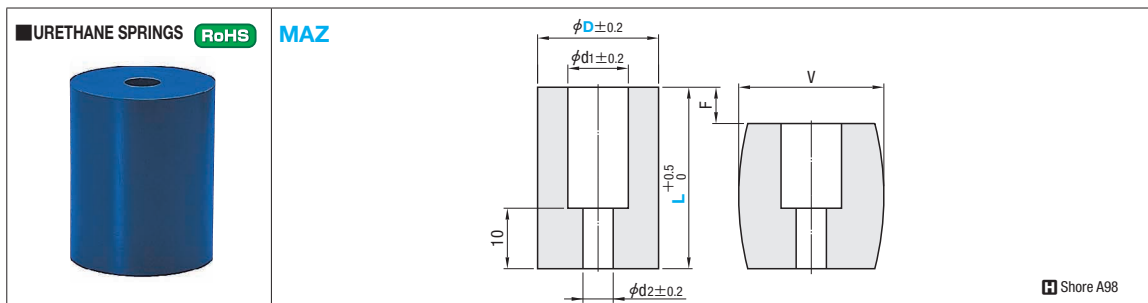
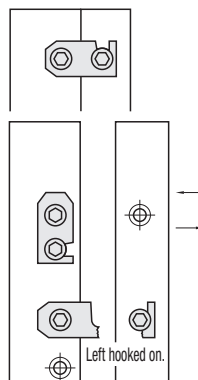
Order Part Number - L - S - Color  
 DPPFN25 - 80 - S20 - Y

Days to Ship **Quotation**

Price **Quotation**

**EX** Example  
 Use this plate to keep the mold closed when storing or moving it.

Even if molding is accidentally started with the plate hooked on, its cut-out section breaks first and keeps the die plates and holders undamaged.



| F=L×10% |            | F=L×15% |             | F=L×20% |              | D    | d <sub>1</sub> | d <sub>2</sub> | Bolt size | L  | Part Number |           | U/Price   |
|---------|------------|---------|-------------|---------|--------------|------|----------------|----------------|-----------|----|-------------|-----------|-----------|
| F mm    | load N/kgf | F mm    | load N/kgf  | F mm    | load N/kgf   |      |                |                |           |    | Type        | D - L     |           |
| 1.5     |            | 2.2     | 1085 (111)  | 3.0     | 1296 (133)   | 18   | 15             | 8              | 5         | M4 | 15          | MAZ 15-15 | Quotation |
| 2.0     | 860 (88)   | 3.0     | 1085 (111)  | 4.0     | 1296 (133)   |      |                |                |           |    | 20          | 20        |           |
| 2.5     |            | 3.7     | 1393        | 5.0     | 1463         |      |                |                |           |    | 25          | 25        |           |
| 2.0     |            | 3.0     | 3854 (393)  | 4.0     | 4540 (463)   | 23.9 | 20             |                |           | M6 | 20          | MAZ 20-20 | Quotation |
| 2.5     | 3207 (327) | 3.7     | 3854 (393)  | 5.0     | 463          |      |                |                |           |    | 25          | 25        |           |
| 3.0     |            | 4.5     | 463         | 6.0     |              |      |                |                |           |    | 30          | 30        |           |
| 2.5     |            | 3.7     | 7090 (723)  | 5.0     | 8306 (847)   | 29.9 | 25             | 11             | 7         | M6 | 25          | MAZ 25-25 | Quotation |
| 3.0     | 5894 (601) | 4.5     | 7090 (723)  | 6.0     | 8306 (847)   |      |                |                |           |    | 30          | 30        |           |
| 3.5     |            | 5.2     | 847         | 7.0     |              |      |                |                |           |    | 35          | 35        |           |
| 4.0     |            | 6.0     |             | 8.0     |              | 40   | 40             |                |           |    |             |           |           |
| 3.0     |            | 4.5     | 9954 (1015) | 6.0     | 11640 (1187) | 36   | 30             | 14             | 9         | M8 | 30          | MAZ 30-30 | Quotation |
| 3.5     | 8306 (847) | 5.2     | 9954 (1015) | 7.0     | 1187         |      |                |                |           |    | 35          | 35        |           |
| 4.0     |            | 6.0     | 1187        | 8.0     |              |      |                |                |           |    | 40          | 40        |           |

### Characteristic value

| Item                       | Unit    | Characteristic value |
|----------------------------|---------|----------------------|
| Hardness                   | Shore A | 98                   |
| Tensile strength           | MPa     | 47.9                 |
| Elongation                 | %       | 440                  |
| Heat resistant temperature | °C      | 100                  |
| Dissolution temperature    | °C      | 200                  |

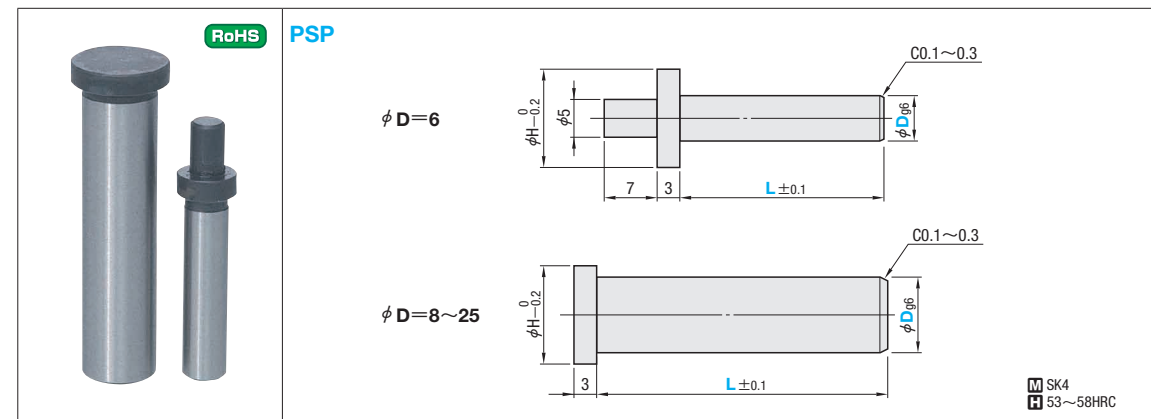
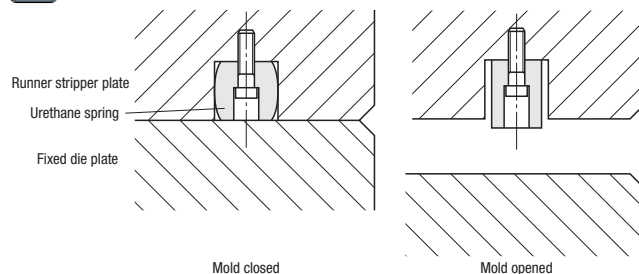
⚠ The above value is the reference value. It is not a guarantee value.  
 ⚠ Although urethane itself has a heat resistant temperature of 100°C, when used continuously its durability falls, so use it at a temperature of no more than 80°C.

Order Part Number  
 MAZ20-30

**EX** Example Use for returning the stripper plate earlier.

Days to Ship **Quotation**

Price **Quotation**



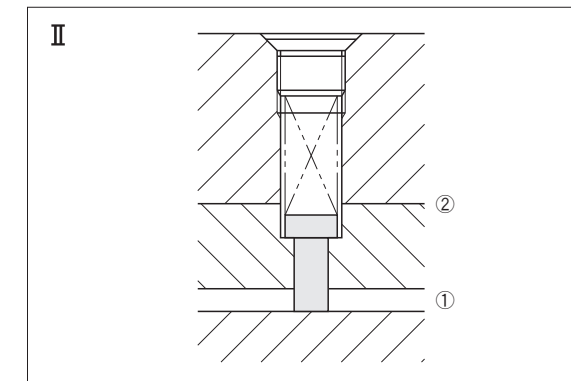
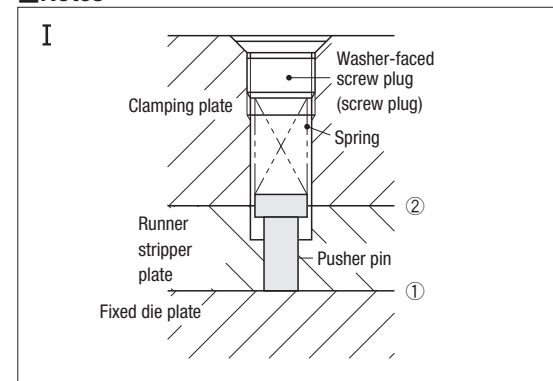
| D <sub>g6</sub> | H               | Part Number |    | L 1mm increments | U/Price 1~9 |
|-----------------|-----------------|-------------|----|------------------|-------------|
|                 |                 | Type        | D  |                  |             |
| 6               | -0.004<br>0.012 | PSP         | 6  | 10~50            | Quotation   |
| 8               | -0.005          |             | 8  |                  |             |
| 10              | -0.014          |             | 10 |                  |             |
| 13              | -0.006          | PSP         | 13 | 10~70            | Quotation   |
| 16              | -0.017          |             | 16 |                  |             |
| 20              | -0.007          |             | 20 |                  |             |
| 25              | -0.020          | PSP         | 25 | 20~80            | Quotation   |
|                 |                 |             |    |                  |             |

Order Part Number - L  
 PSP8 - 15

Price **Quotation**

Days to Ship **Quotation**

### Notes



Combined with a spring and washer-faced screw plug (or a plain screw plug), the pusher pin provides functions required for three-plate mold opening and quick stripper plate return.

When a three-plate mold is opened, space ① between the base plate and runner stripper plate opens first. To make area ② open smoothly, the spring's free length should be adjusted so that it still compresses the pusher pin in the state shown in Fig. II.

- Spring..... P.1222~1396
- Washer-faced screw plug..... P.1193
- Screw plug..... P.1193

### Applicable Springs · Washer-faced Screw Plugs · (Plain) Screw Plugs

| Pusher pin D | H  | External diameter of springs |              | Washer-faced screw plug | Screw plug |
|--------------|----|------------------------------|--------------|-------------------------|------------|
|              |    | Coils                        | Wire springs |                         |            |
| 6            | 8  | —                            | 8 or less    | MSWZ 10                 | MSW 10     |
| 8            | 10 | 10 or less                   | 10 or less   | *MSWZ 12                | *MSW 12    |
| 10           | 13 | 12.5 or less                 | 13 or less   | *MSWZ 16                | *MSW 16    |
| 13           | 16 | 16 or less                   | 16 or less   | *MSWZ 18                | *MSW 18    |
| 16           | 19 | 18 or less                   | 18 or less   | *MSWZ 22                | *MSW 22    |
| 20           | 23 | 22 or less                   | 22 or less   | —                       | *MSW 27    |
| 25           | 28 | 27 or less                   | 27 or less   | —                       | *MSW 30    |

\*Fine thread (Pitch 1.5)