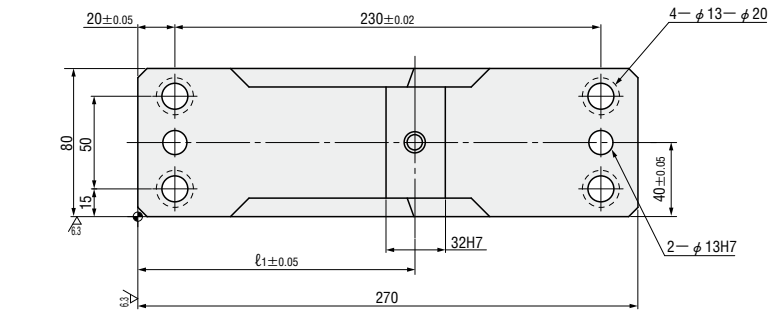


STANDARD FLYING CAM UNITS FOR PIERCE

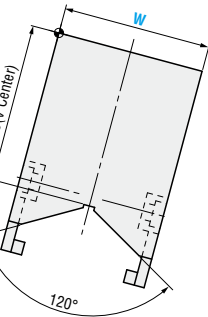
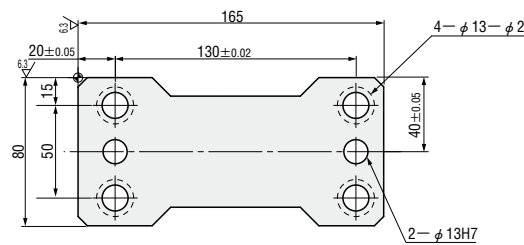
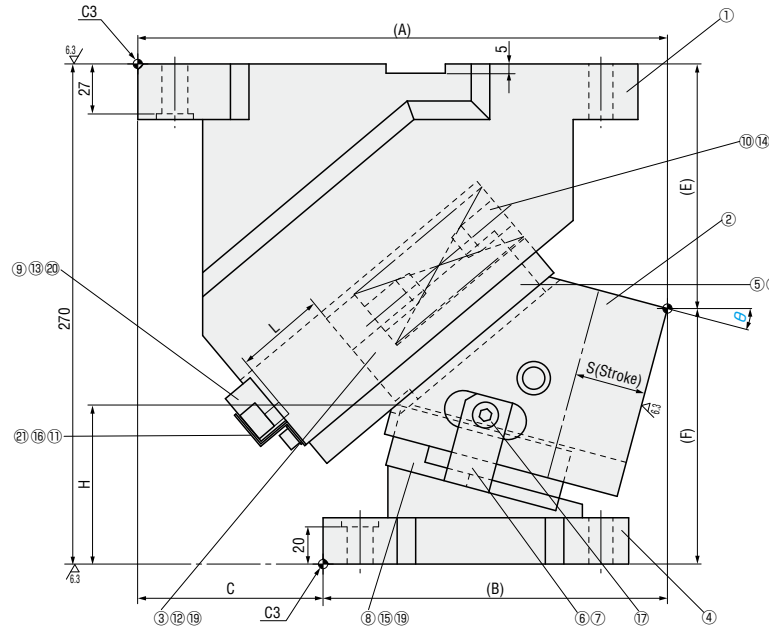
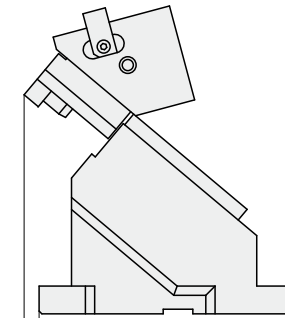
— MGFV · MEVN —



— With automatic alignment — **MGFV80 ($\theta=00-60$)**
 — Without automatic alignment — **MEVN80 ($\theta=00-60$)**
 (Economy type)



■ Rear removal space



■ Components table P.1179

W	θ	A	B	C	E	F	H	L	ℓ_1	x	
80	00	260	160	100	99	171	83	50	130	12	
	05	272.93	172.93		109.39	160.61	83.8		150	170	17
	10	279.92	179.92		120.43	149.57	84.6				
	15	285.93	185.93	132.04	137.96	85.3					
	20	285.9	195.9	90	129.12	140.88	100.9		27		
	25	289.8	199.8		141.6	128.4	101.5				
	30	282.59	207.59	75	134.36	135.64	121.9	36			
	35	284.27	209.27		147.32	122.68	122.3				
	40	274.8	214.8	60	140.38	129.62	142.6	45			
	45	274.2	214.2		153.44	116.56	142.7				
	50	262.46	227.46	35	151.39	118.61	157.8	57			
	55	259.6	224.6		164.14	105.86					
60	240.64	240.64	0		176.59	93.41			157.7		

Slide Stroke S	Working force KN (tonf)		Spring load N (kgf)			Total weight kg	Catalog No.	W	θ
	Standard working force	Max. working force	Preload	5mm before bottom dead center	Max. load				
32.1	39.2 (4.0)	78.5 (8.0)	270 (27.5)	1409(143.7)	1620 (165.2)	25.9	— With automatic alignment — MGFV	80	00
38.4				1445(147.3)		26.3			05
38.9				1447(147.6)		26.6			10
39.7				1450(147.8)		25.1			15
46.1				1474(150.3)		25.3			20
47.8				1480(150.9)		25.3			25
54.3				1496(152.5)		23.2			30
57.4				1501(153.1)		23.4			35
64.3				1515(154.5)		22.4			40
69.6				1523(155.3)		22.4			45
77.8				1534(156.4)		21.6			50
87.2				1542(157.2)		21.7			55
98.5	1553(158.3)	23.2	60						

Order **Catalog No.** MGFV **W** 80 **θ** 25

Days to Ship **Quotation**

Price **Quotation**

Alterations **Catalog No.** MGFV **W** 80 **θ** 15 **(N12 · N16 · etc.)** N12

Alterations	Code	Spec.
$\phi 12H7$ or $\phi 16H7$	N12	Change dowel hole diameter $\phi 13H7 \Rightarrow \phi 12H7$
	N16	Change dowel hole diameter $\phi 13H7 \Rightarrow \phi 16H7$
	K	Add locating key (With 1 hexagon socket head cap screws M8×15)
	SC	Move forward mounting surface $0 \leq SC \leq 60$ 1mm increment
	WC	Change the width of mounting surface $W=80 \Rightarrow W=100$ or 120 Only 100 or 120 can be specified