

Prismen

1048.300

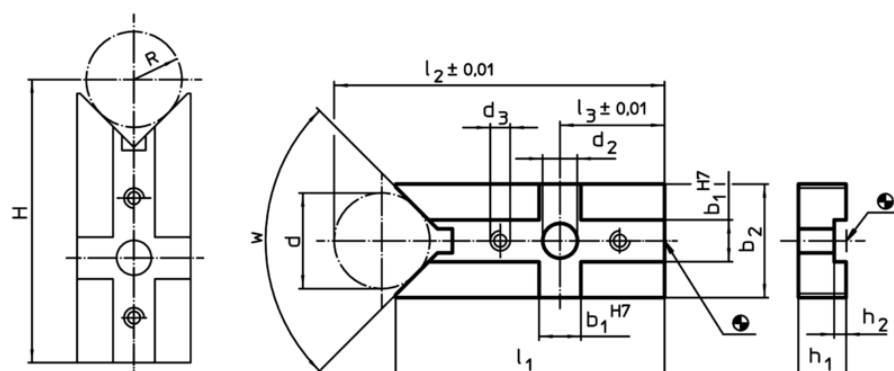


Produktbeschreibung

Werkstoff

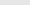
- Stahl, einsatzgehärtet, geschliffen

Maßzeichnung



$$\begin{aligned}
 H &= (R \times 1,414) + 49,497 \quad [1048.200] \\
 H &= (R \times 1,414) + 48,996 \quad [1048.300] \\
 H &= (R \times 1,155) + 77,025 \quad [1148.000] \\
 H &= (R \times 1,155) + 81,204 \quad [1148.100] \\
 H &= (R \times 1,414) + 72,872 \quad [1148.200] \\
 H &= (R \times 1,414) + 73,159 \quad [1148.300]
 \end{aligned}$$

Bestellinformationen

System	Abmessungen												w		Art.-Nr.
	b ₁	d	b ₂	d ₂	d ₃	l ₁	l ₂	l ₃	h ₁	h ₂	d min.	d max.			
	[mm]														
V40	10	30	38	6,6	M4	66	85,21	20	10	2,6	8	44	90°	158	1048.300

Anwendungsbeispiel

