

## Prismen

1148.000

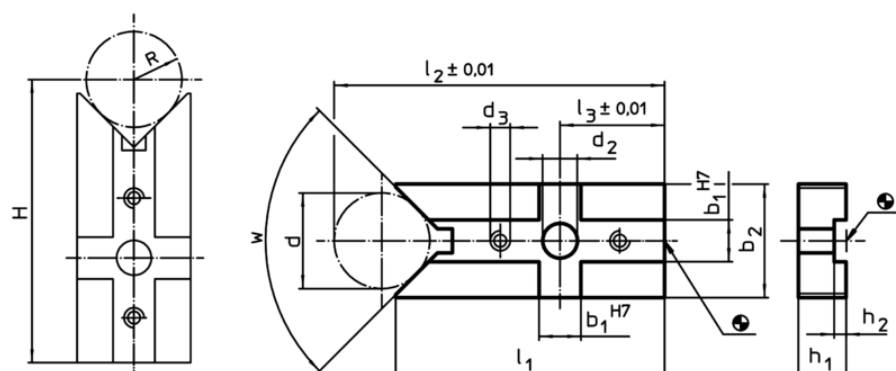


### Produktbeschreibung

#### Werkstoff

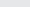
- Stahl, einsatzgehärtet, geschliffen

### Maßzeichnung



$H = (R \times 1,414) + 49,497$  [1048.200]  
 $H = (R \times 1,414) + 48,996$  [1048.300]  
 $H = (R \times 1,155) + 77,025$  [1148.000]  
 $H = (R \times 1,155) + 81,204$  [1148.100]  
 $H = (R \times 1,414) + 72,872$  [1148.200]  
 $H = (R \times 1,414) + 73,159$  [1148.300]

### Bestellinformationen

System	Abmessungen												w		Art.-Nr.
	b <sub>1</sub>	d	b <sub>2</sub>	d <sub>2</sub>	d <sub>3</sub>	l <sub>1</sub>	l <sub>2</sub>	l <sub>3</sub>	h <sub>1</sub>	h <sub>2</sub>	d min.	d max.			
	[mm]														
V70	14	32	38	13	M6	87	111,5	35	16	4	18	66	120°	330	1148.000

### Anwendungsbeispiel

