

Prismen

1148.200

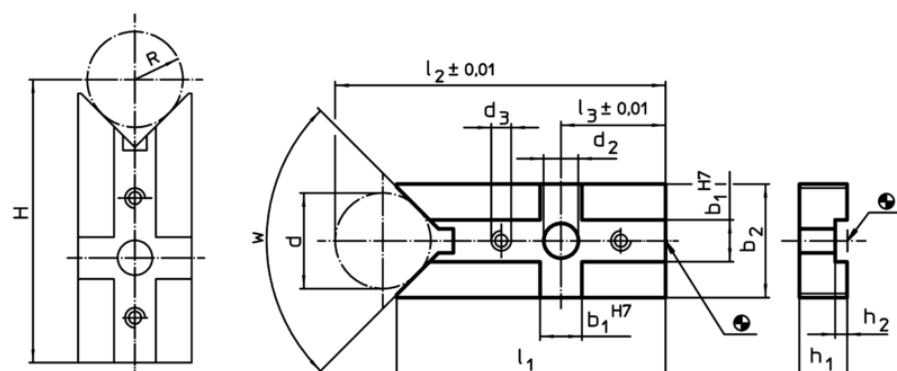


Produktbeschreibung

Werkstoff

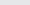
- Stahl, einsatzgehärtet, geschliffen

Maßzeichnung



$H = (R \times 1,414) + 49,497$	[1048.200]
$H = (R \times 1,414) + 48,996$	[1048.300]
$H = (R \times 1,155) + 77,025$	[1148.000]
$H = (R \times 1,155) + 81,204$	[1148.100]
$H = (R \times 1,414) + 72,872$	[1148.200]
$H = (R \times 1,414) + 73,159$	[1148.300]

Bestellinformationen

System	Abmessungen												w		Art.-Nr.
	b ₁	d	b ₂	d ₂	d ₃	l ₁	l ₂	l ₃	h ₁	h ₂	d min.	d max.			
	[mm]														
V70	14	32	38	13	M6	90	111,5	35	16	4	14	44	90°	325	1148.200

Anwendungsbeispiel

