

# Anschläge• plan

1586.071



## Produktbeschreibung

### Werkstoff

#### Grundkörper

- Werkzeugstahl, gehärtet

## Maßzeichnung

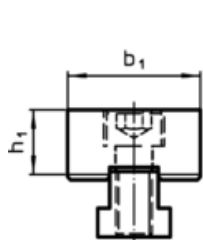


Bild 1

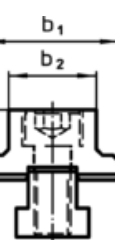
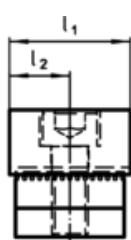


Bild 2

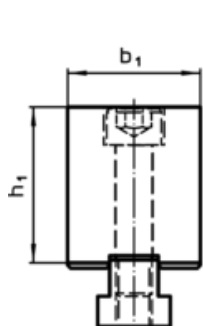
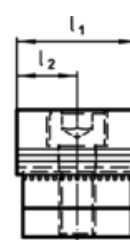


Bild 3

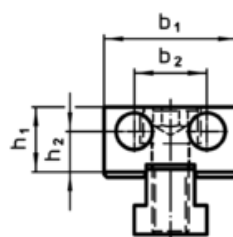
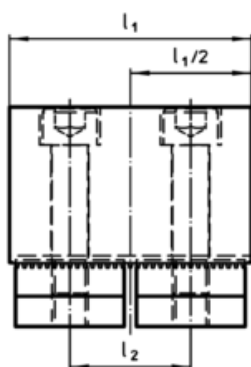
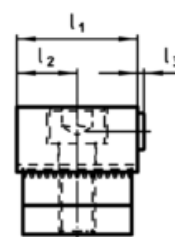


Bild 4



## Bestellinformationen

Abmessungen						[g]	Art.-Nr.
$l_1$	$l_2$	$b_1$	$b_2$	$h_1$	$h_2$		
[mm]							
plan, beidseitig; Breite gekürzt – Bild 2							
40	20	44	29	21,4	6,4	340	1586.071